



Efficient pumping solutions
for paper industry

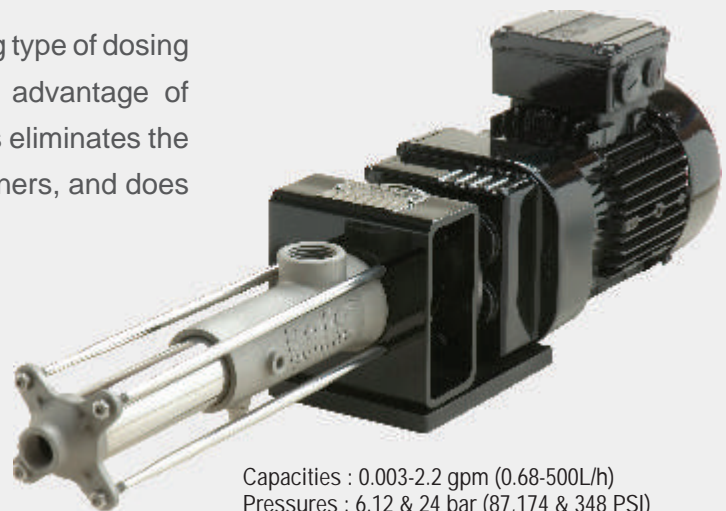
Roto Pumps in Pulp & Paper Industry

Roto Pumps has a vintage of over 40 years in providing fluid handling solution to a spectrum of Industries. These pumps can handle wide variety of fluids ranging from clean and clear liquids to abrasive, corrosive, viscous and solid laden media. In paper industry these pumps are used in all major stages including Pulp Making, Pulp preparation and Kitchen Coating. Some of the few design features include:

- Flow proportionate to Speed - Can be used for Dosing and metering applications
- Self Priming - Excellent Suction Lift Capability and can operate under vacuum
- Non-Clogging - Can handle solids in suspension
- Low Internal Velocity - Can handle shear sensitive media
- Positive Displacement - Flow independent of Head
- Will not Vapor Lock - Can handle air, liquid and combination together

As compared to conventional reciprocating type of dosing pumps, Roto RJ Series Offer a unique advantage of smooth, laminar & pulsating free flow. This eliminates the need of accessories like pulsation dampeners, and does not affect the property of media.

Introducing
RJ series pump
for precise metering applications



Capacities : 0.003-2.2 gpm (0.68-500L/h)
Pressures : 6.12 & 24 bar (87,174 & 348 PSI)

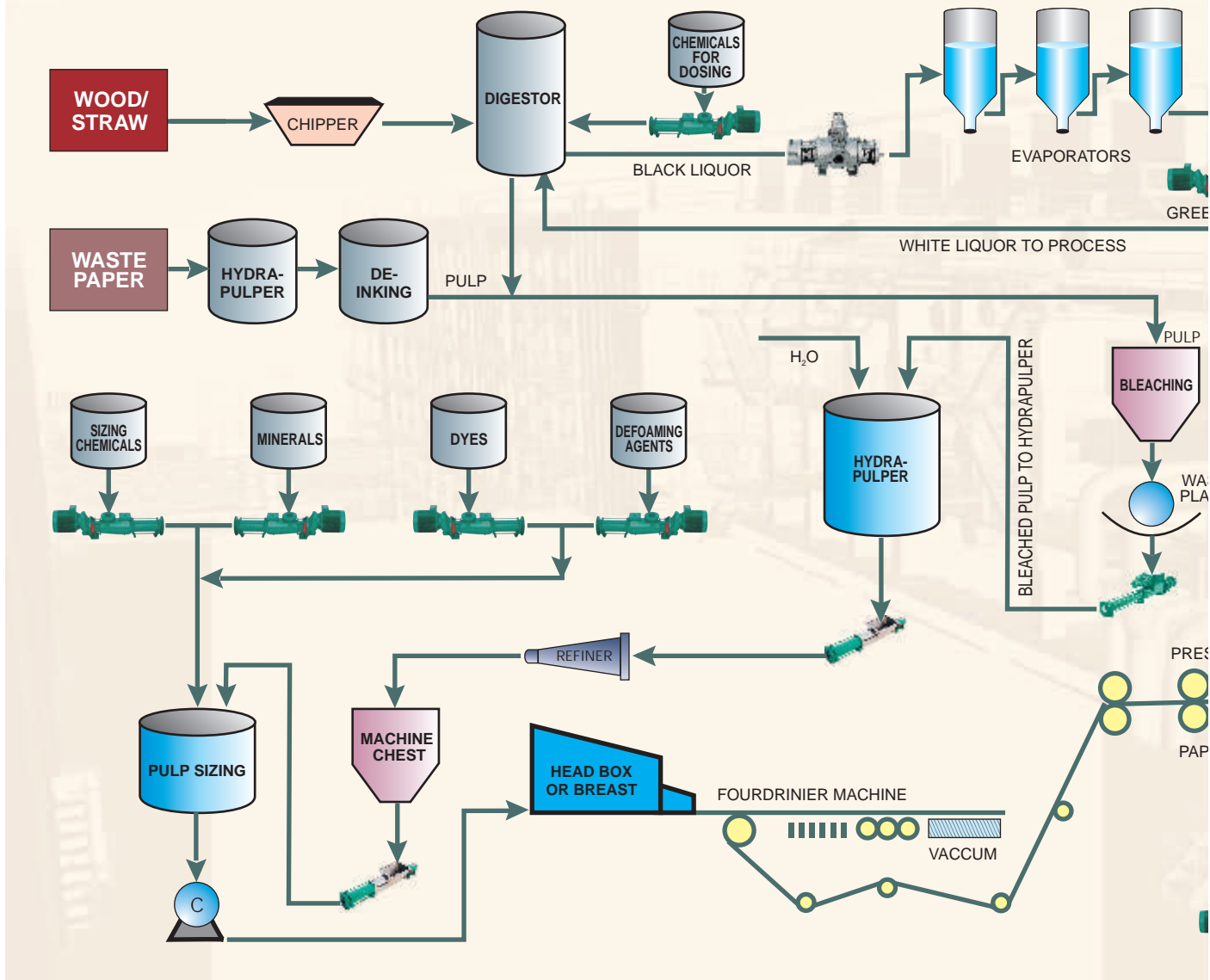
RJ series of dosing pumps

Roto RJ series pumps are developed for low flow applications that demand high accuracies and repeatability. These pumps can handle wide variety of fluids ranging from clean and clear liquids to abrasive, corrosive, viscous and solid laden media. The repeatability accuracy has less than 1% fluctuation. Available in 6 capacities and 3 pressure ranges, flow rates from 0.003 – 2.2 USgpm (0.68 – 500 l/h) at 87, 174 & 348 psi (6, 12 and 24 bar) differential pressure.

Advantages

- Capacity is directly proportionate to the speed
- Head developed, is independent of speed
- Inherently self-priming
- Non-clogging
- Single rotating element. No valves or gears required
- Low NPSH (R)
- Low shear and linear flow
- Reversible
- Smooth & non-pulsating flow
- High suction lift capability up to 9.5 mwc
- Only change of pumping elements is required to obtain different capacities
- Simple to operate
- Low operating costs

FLOW DIAGRAM OF A TYPIC



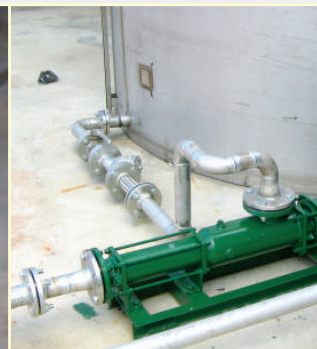
APPLICATIONS :

Pulp Making Process

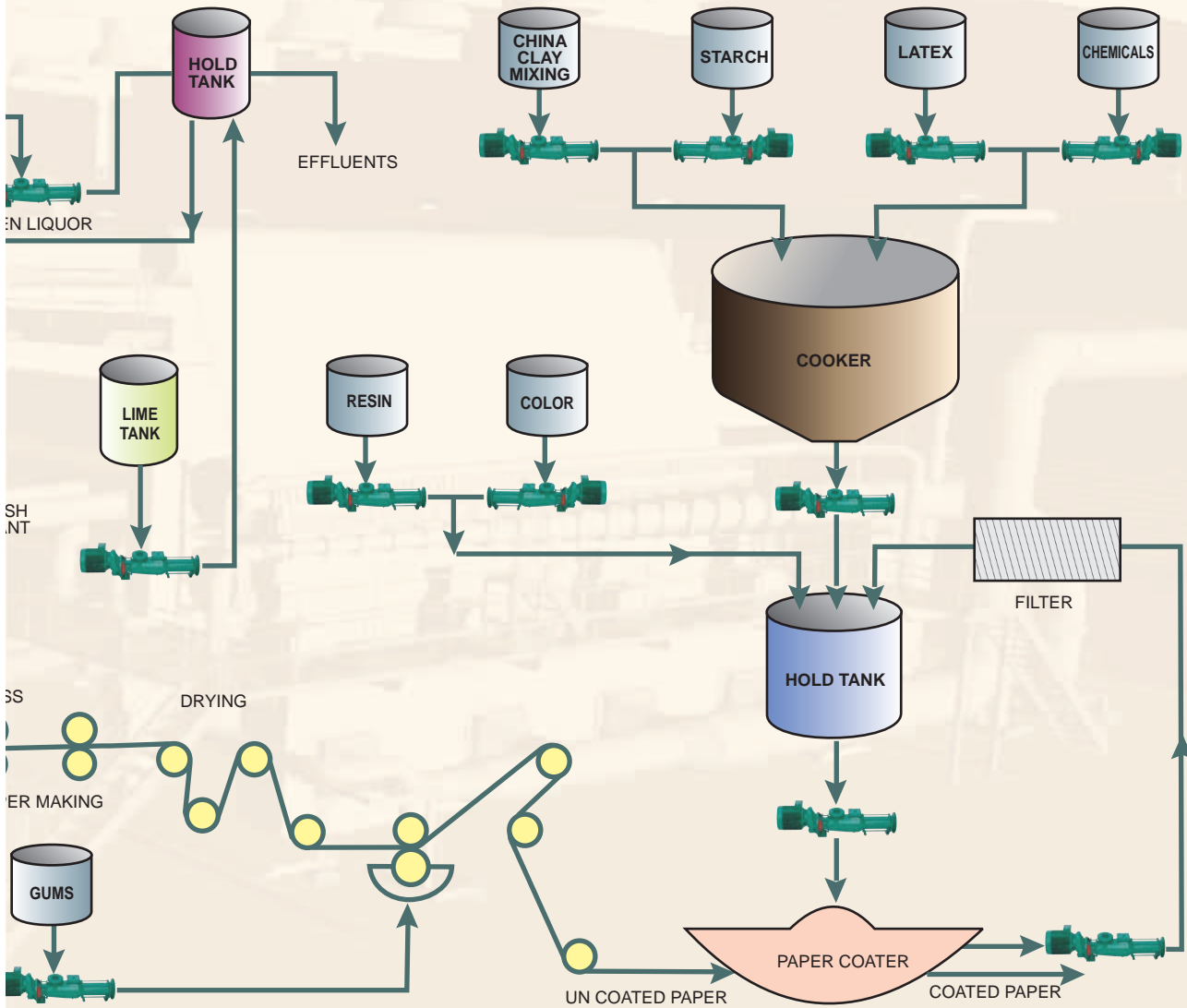
- Black Liquor
- Green Liquor
- Sodium Hydroxide
- Sodium Sulfide
- Sodium Carbonate
- Decolouring Agent
- High Density Pulp

Pulp Preparation Process

- Sizing Chemicals
- Rosin
- Neutral Sizing
- Calcium Carbonate
- Alkylketens Dimmer(AKD)
- Alkenylsuccinic Anhydride (ASA)
- Mineral Filler
- Talcum
- Kaolin
- Calcium Carbonate
- Carbon Dioxide
- Low Density Pulp
- Pigments
- Colour
- Optical
- Defoam
- Retain
- paper
- Fiber



AL PULP AND PAPER INDUSTRY



Paper Making Process

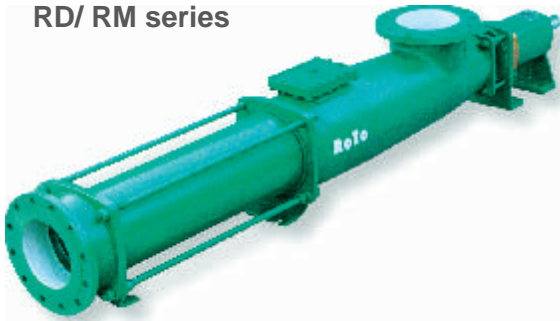
- Starch
- Polyvinyl Alcohol
- Wax
- Latex

Paper Coating Process

- Starch
- China Clay
- Resin
- Latex
- Chemicals
- Colour
- Kitchen Coating Slurry

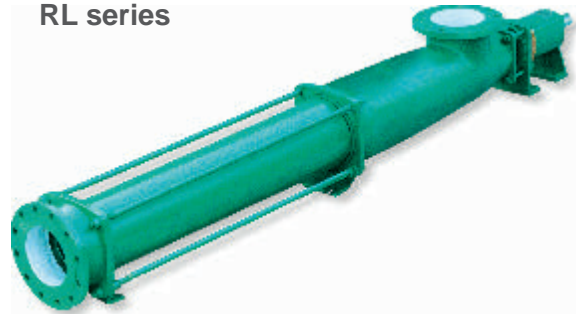


**Industrial
RD/ RM series**



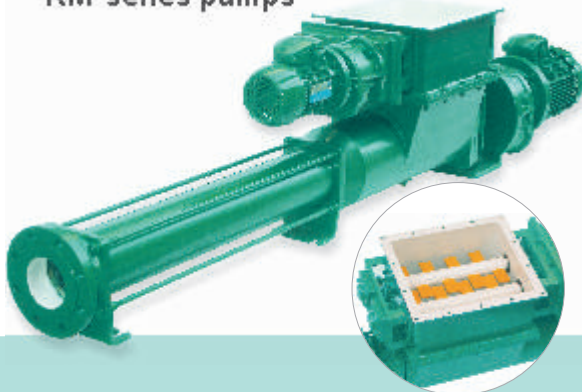
Capacities 200 M³/hr (880 GPM)
Pressures upto 48 Bar (682 Psi)

**Extra Large Capacity
RL series**



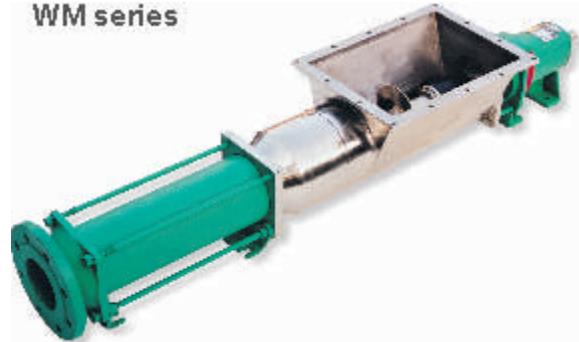
Capacities upto 345 M³/hr (1520 GPM)
Pressures upto 6 Bar (85 Psi)

**Widethroat with Bridgebreaker
'KM' series pumps**



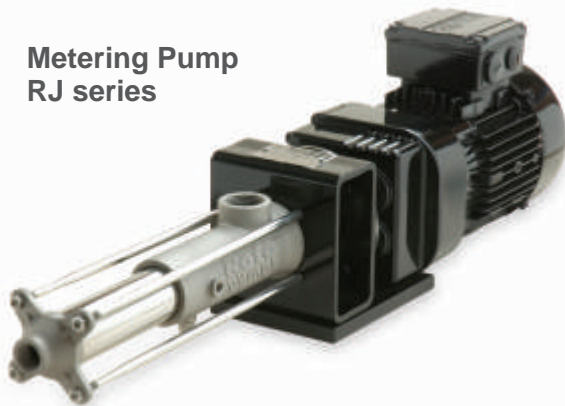
Capacities 25 M³/hr (108 GPM)
Pressures upto 48 Bar (682 Psi)

**Wide Throat
WM series**



Capacities upto 200 M³/hr (880 GPM)
Pressures upto 36 Bar (511 Psi)

**Metering Pump
RJ series**



Capacities between 7.50–500 LPH
(0.03–2.2 GPM)
Pressures upto 24Bar (341Psi)

**Submerged Vertical
VM series**



Capacities upto 345 M³/hr
(1520 GPM)
Pressures upto 12 Bar
(171 Psi)



Corporate Office & Export Warehouse
at Duty Free Zone, Noida



Roto's Manufacturing Plant



U.K. Office



Australia Office



ROTO PUMPS LTD.

Marketing Head Office

Roto House,13, Noida Special Economic Zone,
Noida - 201305, INDIA
Tel.: +91 120 3043901-4 Fax: +91 120 3043928
Email: contact@rotopumps.com

Branch Offices and Warehouses

United Kingdom

Unit 1 St Elizabeths Park, Grey Street, Denton,
Manchester, M34 3RU
Tel.: +44 161 4775511 Fax: +44 161 4747900
Email: sales@rotopumps.co.uk

Australia

26, Deans Court, Dandenong South, Victoria 3175
Tel.: +61 3 97945200 Fax: +61 3 97945900
E mail: melb@rotopumps.com.au

www.rotopumps.com

Infrastructure

Roto has strong roots in manufacturing engineering & has over the years been able to develop efficient manufacturing processes both in the field of metal cutting and rubber processing.

The present manufacturing infrastructure comprises of a facility spread over 20,000 sq.mt and deploys all modern machine tools. It has created multiple assembly sections in terms of pump sizes to meet the growing demand for its products.

The testing infrastructure comprises of both water and oil test bed facilities. The testing facility is equipped to comply with VDMA and API 676 standard. The facility can test pumps with capacity upto 1000 m3/hr and has power available upto 500KW.

Marketing & Distribution Network

Roto has rich experience of 40 years of moving fluids positively; this caption has been realized by Roto not only in words but also in spirits. Customer Satisfaction has been one of the strongest ideologies at Roto.

While Roto enjoys a market leadership position in India, it has also been able to establish its overseas marketing offices and warehouses in Australia and United Kingdom to cater to the large European Market. It has also established prominent distributors all over Europe, Middle East, South East, Far East and North & South America too.

Quality Certifications and Registrations

Roto is known for conducting its business with integrity; for delivering high-quality pumps on time and within budget; and for our unwavering commitment to safety, health, and the environment. Our identity is derived from our people, processes, and technology.

Roto's manufacturing units are certified for conformance to the ISO 9001-2008 quality surveillance systems. More recently, we have been accredited with ATEX Certifications. We are also in the process upgrading to ISO 14001 and OHSAS 18001 (Occupation Health and Safety Environment)

Research and Development

Roto enjoys the legacy of being amongst the leading Progressive Cavity Pump manufacturers and processes deep & sound designing capabilities, which has been developed over the last 4 decades. R & D activity within Roto has lead to the launch of numerous new products with some of the most distinguished features, high degree of reliability & immaculate product performance.

Roto has a battery of licenses of 3D designing software such as solid works and also deploys advances software for flow analysis, mechanical strength and cost optimisation.